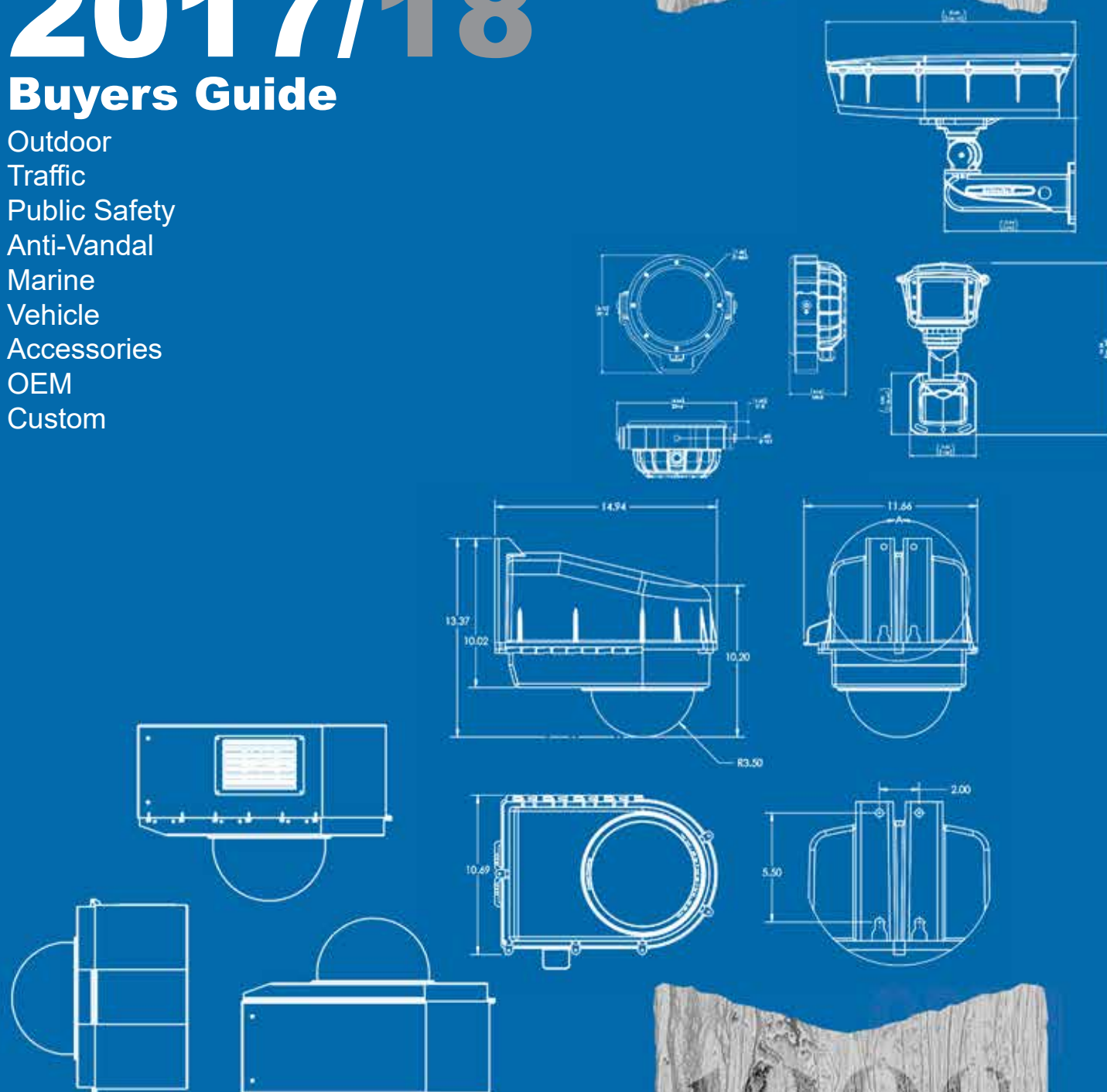




Buyers Guide

Outdoor
Traffic
Public Safety
Anti-Vandal
Marine
Vehicle
Accessories
OEM
Custom



The King of ALL Housings!



About Us

Simply the BEST Outdoor Video Products

Company History

For 19 years Dotworkz continues to produce professional grade outdoor and extreme climate camera protection solutions. Our products give integrators, dealers, distributors, IT consultants, and camera manufacturers an extensive product line engineered to withstand and thrive in all environments. Our products are American made to the highest standards and certification levels to insure quality and performance while extending the life of cameras and sensitive electronics.

Our Mission

Our mission is to produce installation ready network based video solutions for our partners worldwide. We aim to promote products that allow video technologies to be deployed in locations to benefit public safety, security, and asset protection while increasing global communications.

(866) 575-4689 | Shipping Worldwide

estore.dotworkz.com

American Made ★★★★★ American Strong ★★★★★



How We Do It!

For over 19 years Dotworkz has been creating innovative outdoor camera solutions. Most of what we've learned has been under the approach of no matter what we build it has to do these 3 things: solve a problem, be pleasing to the eye, and most importantly it has to be a great product. Many of our products have similar characteristics through the model lineup. For example our cooled camera housings use a specialized reflective thermoplastic core material that reduces camera damaging heat from conducting into the housing. This innovative material is also used as the base material for protecting cameras in extreme cold weather as well since our Ring of Fire housings are often exposed to extreme -40 degrees F or colder areas of the world. We have been able to reduce cold temperature exposure to sensitive cameras by adding a regulated 60 watt heater inside the protective thermoplastic shell. Much of the problem solving "DNA" in the Dotworkz product line comes from our hands on approach to design and build from our past achievements. Prior to 1998, before the Dotworkz group began manufacturing products we were installers, integrators, video system pioneers, and also know for our camera maintenance service. Today with many patents, OEM's, industry awards, and worldwide distribution, Dotworkz innovations will stay true to our core values and push forward to produce even greater products into the future.

"Dotworkz has been the easy button for integrators."

"Your products give us the edge needed to compete on outdoor camera project bids."

"We loved the DomeCleaner tool so much we purchased 90 units for our field team."

"I drove 4 hours just to meet their team and tell them how much we love their products."



D2 camera housings are 99% compatible with all PTZ cameras made over the last 15 years. There is enough room inside to add a fiber modem, cellular uplink, and even a NVR next to camera.



S-Type brick style housings come with the strongest and steadiest stainless steel support arm, likely ever built for outdoor cameras, with plenty of room inside for big powerful cameras and long range lenses.



DomeCleanerPRO™ 25 Series carbon fiber pole and microfiber mitts cleans all camera types safely from the ground in less than 3 minutes.



BASH™ camera housings are designed to look similar to light fixtures and inside contains a built in vibration damping main support ring.



Large scale, outdoor housings that are designed to protect broadcast quality cameras.



AWARD WINNING PRODUCTS!



Outdoor camera solutions that make a difference

D Series

PTZ IP68 Camera Housing

The Dotworkz D Series camera housing is engineered for optimal camera performance and reliability with all PTZ, 360°, 180°, multi sensor cameras, 4K ultra high definition security video, long range marine video, and other high value applications.

Vandal Proof Rust Proof Thermoplastic Shell

IP68 Sealed

All brands:
PTZ, 360°,
180°, and
multi sensor
camera
compatible

IK10 High Impact Ultra Clear
4K + Optical Nylon Lens

Stainless Steel
Hardware

IP68 Cable
Glands

Smart City
Options

Fits Optional
Accessories

Fits Optional
Xero 2.0 NVR

City Wide
Surveillance



Optional Heavy Gauge
Stainless Steel
Ballistic Shield Kit

Paintable* Shell



OPTION CLIMATE PROTECTION LEVELS

Ring of Fire	Extreme cold as low as -60° F (-51° C) with de-icing
Heater Blower	Variable range for -25° F (-32° C) to 122° F (50° C)
Cooldome™	Extreme heat as high as 167° F (75° C) with active cooling
Tornado	Up to 140° F (60° C) & up to a 95% humidity
Solar	Low wattage from 30° F (-1° C) to 95° F (35° C)
Mild	Temperate range from 50° F (10° C) to 85° F (30° C)

*Custom order

(866) 575-4689 | Shipping Worldwide

estore.dotworkz.com

American Made ★★★★★ American Strong ★★★★★

BASHTM

Ballistic Anti-Shock Housing

Professional camera armor for all mobile, marine, and security video applications with IP68 protection. Designed for all mini-dome, megapixel, micro PTZ, HD, and specialty cameras.



Any Location
Any Angle

Mini Dome IP68 Camera Housing

Type III Hard Marine Anodized 6061-T6 Aluminum

Vibration
Suppression

All brands: mini-
dome, megapixel,
micro PTZ, HD,
and specialty
cameras

Stainless
Steel
Hardware

IP68
Sealed

Pole
Mount

Ultra Clear High Impact Lens

Metalized High Impact Lens

Tinted High Impact Dome Lens

- Original / G-PRO Models with Passive Cooling
- All-Pro Heater Blower with PoE and/or 12VDC

S-Type

Brick Style/Long Range IP68 Camera Housing

The Dotworkz S-Type professional grade outdoor video surveillance protection system is optimized for high performance static video cameras, including the latest precision HD/megapixel network based systems. The new Stainless Steel arm provides extra strength, corrosion proofing, greater stability, and durability for long range video applications, thermal, static, fixed, and other brick style cameras.

Vandal Proof Rust Proof
Thermoplastic Shell

Stainless Steel
Hardware

IP68
Sealed
Equivalent
Fits Optional
Accessories

Ultra Clear High
Impact Lens

IP68 Cable
Glands

All brands: 4K, long
range, thermal, and
other brick style
cameras

Stainless Steel Arm

Optional Power
Supply Mounted Inside Arm

OEM Traffic
Management



Optional Heavy Gauge Stainless
Steel Ballistic Shield Kit

Cooldome™

Up to a 45° differential temperature between the inside and outside of the housing.

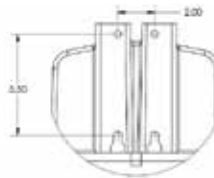
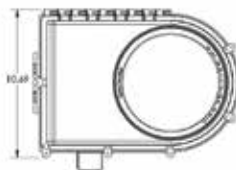
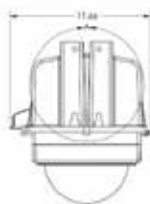
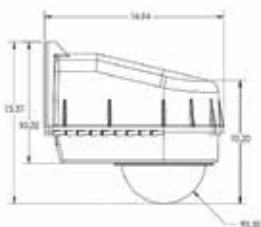
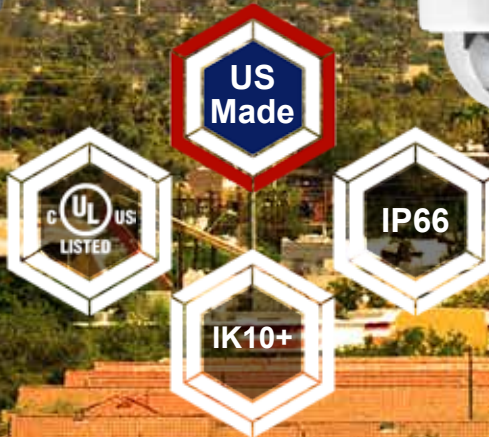
D Series

The D Series Cooldome™ IP66 offers up to 167° F (75° C) protection and up to a 45° differential temperature between the inside and outside of the housing. The D2 and D3 provides optimal camera performance and reliability with all PTZ, 360°, 180°, multi sensor cameras, 4K ultra high definition security video, and broadcast video.

Model #:
D2-CD



Model #:
D3-CD



Specifications

Operating Temperature (Absolute/Rec.):
-40° to 167°F (-40°C to 75°C)
30° to 145°F (-1°C to 63°C)
Power Consumption (without camera):
9 amps @ 12 VDC typical at full load
Input Power Source Options:
12 VDC, 110 V AC, or 220 VAC
Output for Camera Power:
12 VDC (24 VDC model available)
Internal Power Available for Camera:
3 amps @ 12 VDC on typical model
Shipping: 17" x 13" x 16" 15 lbs (6.8 Kg)

(866) 575-4689 | Shipping Worldwide

estore.dotworkz.com

American Made ★★★★★ American Strong ★★★★★

Thermostatically controlled active cooling for hot climates.

S-Type

The S-Type Cooldome™ offers up to 167° F (75° C) protection and up to a 45° differential temperature between the inside and outside of the housing. This professional grade outdoor video surveillance protection system is optimized for high performance static video cameras, including the latest precision HD/megapixel network based systems. The new Stainless Steel arm provides extra strength, corrosion proofing, greater stability, and durability.

BASH
Ballistic Anti-Shock Housing

Introducing the first IP68 Cooldome™ BASH camera enclosure. Designed for all mini-dome, megapixel, micro PTZ, HD, and specialty cameras. BASH offers the most versatile mounting solutions allowing you to mount it at any location, at any angle.



**NEW:
Stainless
Steel Arm**

**Model #:
ST-CD-SS**



**Model #:
BASH-CD**

**Special
Order**

IP68

IK10+

**US
Made**

IP66

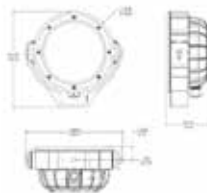
**UL
LISTED**

**US
Made**



Specifications

Operating Temperature (Absolute/Rec.):
-40° to 167°F (-40°C to 75°C)
30° to 145°F (-1°C to 63°C)
Power Consumption (without camera):
9 amps @ 12 VDC typical at full load
Input Power Source Options:
12 VDC, 110 V AC, or 220 VAC
Outputs for Camera Power:
12 VDC (24 VDC model also available)
Internal Power Available for Camera:
3 amps @ 12 VDC on typical model
Shipping: 17" x 13" x 16" 15 lbs (6.8 Kg)



Specifications

Operating Temperature (Absolute/Rec.):
-40° to 145°F (-40°C to 63°C)
30° to 128°F (-1°C to 53°C)
Power Consumption:
6 amps @ 12CDV typical at full load
MVP Input Power Source Options:
12VDC, 110 VAC, or 220 VAC
MVP Output Options for Camera Power:
12VDC, PoE
Internal Power Available for Camera:
2 amps @ 12 VDC on typical model
Shipping: 10" x 11" x 7" - 7 lbs (3.2 Kg)

(866) 575-4689 | Shipping Worldwide

estore.dotworkz.com

American Made ★★★★★ American Strong ★★★★★

Ring of Fire

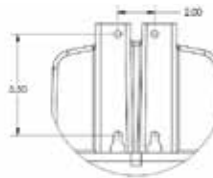
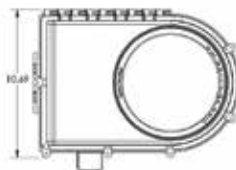
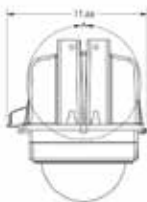
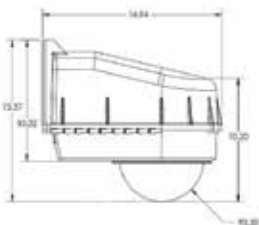
A 65 watt of de-icing power maintains optimal camera temperature range inside.

D Series

The D Series IP68 Ring of Fire camera housing protects cameras from extreme temperatures down to -60° F (-51° C). The on board 65 watts of de-icing power keeps the camera operating at its desired temperature range while also heating the lens so ice literally melts off the housing. The D2 and D3 are engineered for optimal camera performance and reliability with all PTZ, 360°, 180°, multi sensor cameras, 4K ultra high definition security video, long range marine video, and other high value applications.

Model #:
D2-RF-MVP

Model #:
D3-RF-MVP



Specifications

Operating Temperature (Absolute):
-60° to 140°F (-51°C to 60°C)
Operating Temperature (Recommended):
-40° to 120°F (-40°C to 49°C)
Power Consumption:
3 amps @ 115 VAC typical at full load
MVP Input Power Source Options:
24VAC, 110 VAC, or 220 VAC
MVP Output Options for Camera Power:
12 VDC, 24 VDC
Shipping: 24" x 10" x 10" - 11 lbs (5 Kg)

(866) 575-4689 | Shipping Worldwide

estore.dotworkz.com

American Made ★★★★★ American Strong ★★★★★

De-icing power for clear vision and long term use in cold climates.

S-Type

The S-Type Ring of Fire camera housing protects cameras from extreme temperatures down to -60° F (-51° C). The on board 65 watts of de-icing power keeps the camera operating at its ideal temperature range while also heating the lens so ice melts off the lens. This professional grade outdoor video surveillance protection system is optimized for high performance static video cameras, including the latest precision HD/megapixel network based systems. The new Stainless Steel arm provides extra strength, corrosion proofing, greater stability, and durability.

BASHTM Ballistic Anti-Shock Housing

The BASH All-Pro with PoE/12VDC protects small cameras from freezing cold temperatures. The insulated thermoplastic shell and on board heater circulates warm air allowing the camera to operate at its desired temperature range.



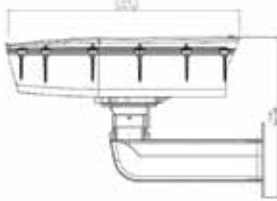
Model #:
ST-RF-MVP-SS



Model #:
BASH-HB-POE

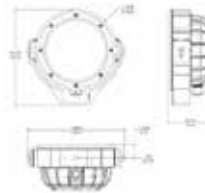


NEW:
Stainless Steel Arm



Specifications

Operating Temperature (Absolute):
-60° to 140°F (-51°C to 60°C)
Operating Temperature (Recommended):
-40° to 120°F (-40°C to 49°C)
Power Consumption:
3 amps @ 115 VAC typical at full load
MVP Input Power Source Options:
24VAC, 110 VAC, or 220 VAC
MVP Output Options for Camera Power:
12 VDC, 24 VDC
Shipping: 24" x 10" x 10" - 11 lbs (5 Kg)



Specifications

Operating Temperature (Absolute):
-60° to 140°F (-51°C to 60°C)
Operating Temperature (Recommended):
-40° to 120°F (-40°C to 49°C)
Power Input:
Passive PoE, 46VDC-56VDC @ 30W
Output Options for Camera Power:
48 VDC Passive PoE, 14W Max
Shipping: 10" x 11" x 7"
- 7 lbs (3.2 Kg)

Solar / Remote

Low wattage solution that provides 12VDC power to the protected camera inside.

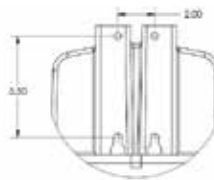
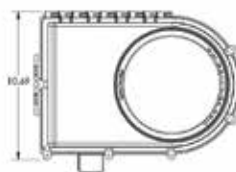
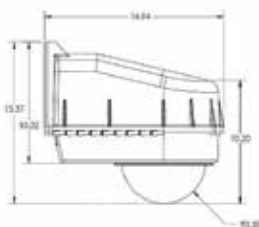
D Series

The D Series IP68 Solar ready camera housing is a low wattage solution providing a stable camera operating temperature range of 30° F (-1° C) to 95° F (35° C) and protects cameras from variable ranging climates from cold to hot.

Model #:
D2-HB-SOLAR



Model #:
D3-HB-SOLAR



Solar ready!

Specifications

Operating Temperature (Absolute/Rec.):
-25° to 140° F (-32° C to 60° C)
0° to 120° F (-17° C to 49° C)
Power Consumption:
Less than 7 watts peak, + camera load @
12VDC input/output model
Input Power Source/Outputs for Camera
Power:
12VDC/12VDC
Internal Power Available for Camera:
3 amps @ 12 VDC on typical model
Shipping: 22" x 13" x 16" - 12 lbs (5.4 Kg)

(866) 575-4689 | Shipping Worldwide

estore.dotworkz.com

American Made ★★★★★ American Strong ★★★★★

Solar ready - 12VDC housing solutions for remote or lower power locations.

S-Type

The S-Type IP68 Solar ready camera housing is a low wattage solution providing a stable camera operating temperature range of 30° F (-1° C) to 95° F (35° C) and protects cameras from variable ranging climates from cold to hot. The new Stainless Steel arm provides extra strength, corrosion proofing, greater stability, and durability.

Model #:
ST-HB-SOLAR-SS



**NEW:
Stainless
Steel Arm**



Solar ready!

Specifications

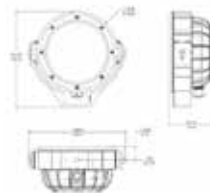
Operating Temperature (Absolute):
-40° to 140°F (-40°C to 60°C)
Operating Temperature (Recommended):
0° to 120°F (-17°C to 49°C)
Power Consumption:
2 amps @ 115 VAC typical at full load
Input Power Source options:
24VDC/VAC, 110 VAC, or 220 VAC
Outputs for Camera Power:
IP: 12VDC, 24VDC / AC (CCTV): 12VDC, 24VAC
Shipping: 24" x 10" x 10" - 15 lbs (6.8 Kg)

BASH

Ballistic Anti-Shock Housing

The BASH G-Pro camera enclosure is a low wattage, solar ready, solution providing a stable camera operating temperature range and protects cameras from variable ranging climates from cold to hot.

Model #:
BASH-GPRO



Solar ready!

Specifications

Enclosure Construction:
Type III Hard Anodized 6061-T6 Aluminum and Heat Resistant Thermoplastic Shell
Lens Construction:
Clear High Impact lens system
Shipping Dimensions:
10" x 11" x 7"
Shipping Weight:
7 lbs (3.2 Kg)
Usable Space Inside Housing:
Fits any GoPro camera model and other action cameras with included mount.

Tornado

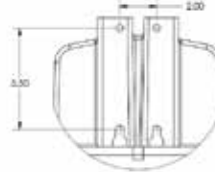
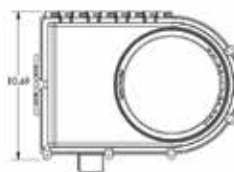
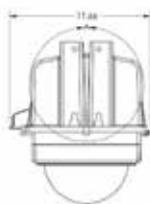
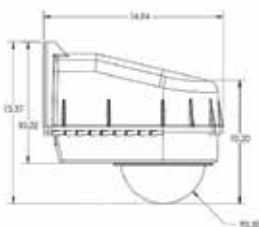
Climate protection against high heat and up to 95% humidity.

D Series

The D Series IP68 Tornado camera housing protects cameras from extreme humidity and hot temperatures up to 140° F (60° C) and up to 95% humidity. Utilizing thermostatically controlled Passive Cooling technology the Tornado housing allows the camera to operate at its desired temperature range and is fully sealed from water, dust, insects, and other harsh chemicals.

Model #:
D2-TR-MVP

Model #:
D3-TR-MVP



Specifications

- Operating Temperature (Absolute/Rec.):
-20° to 140° F (-29° C to 60° C)
30° to 120° F (1° C to 49° C)
- Humidity (Working & Storage):
10% to 95% RH (Non-Condensing)
- Power Consumption:
2 amps @ 115 VAC typical at full load
- MVP Input Power Source Options:
24 VAC/VDC, 110 VAC, or 220 VAC
- MVP Output Options for Camera Power:
12 VDC and 24 V
- Shipping: 17" x 13" x 16" - 12 lbs (5.4 Kg)

(866) 575-4689 | Shipping Worldwide

estore.dotworkz.com

American Made ★★★★★ American Strong ★★★★★

High output blowers for cooling in hot and humid climates.

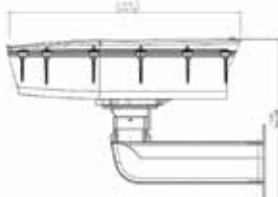
S-Type

The S-Type Tornado camera housing protects cameras from extreme humidity and hot temperatures up to 140° F (60° C) and up to 95% humidity. Utilizing thermostatically controlled passive cooling technology the Tornado housing allows the camera to operate at its desired temperature range and is fully sealed from water, dust, insects, and damaging chemicals. The new Stainless Steel arm provides extra strength, corrosion proofing, greater stability, and durability.



**NEW:
Stainless
Steel Arm**

**Model #:
ST-TR-MVP-SS**



Specifications

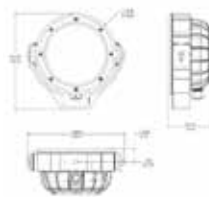
Operating Temperature (Absolute / Rec.):
-20° to 140°F (-7°C to 60°C)
30° to 120°F (1°C to 49°C)
Humidity (Working & Storage):
10% to 95% RH (Non-Condensing)
Power Consumption:
2 amps @ 115 VAC typical at full load
MVP Input Power Source Options:
24 VAC/VDC, 110 VAC, or 220 VAC
MVP Outputs Options for Camera Power:
12 VDC and 24 V (2.2 amps @ 12 VDC)
Shipping: 24" x 10" x 10" - 11 lbs (5 Kg)

(BASH)TM Ballistic Anti-Shock Housing

The BASH All-Pro with PoE/12VDC protects small cameras from hot and humid temperatures. The insulated thermoplastic shell and on board blower circulates the air allowing the camera to operate at its desired temperature range.



**Model #:
BASH-HB-POE**



Specifications

Operating Temperature (Absolute):
-20° to 140°F (-7°C to 60°C)
Operating Temperature (Recommended):
30° to 120°F (1°C to 49°C)
Power Input:
Passive PoE, 46VDC-56VDC @ 30W
Output Options for Camera Power:
48 VDC Passive PoE, 14W Max
Shipping: 10" x 11" x 7"
- 7 lbs (3.2 Kg)

Heater Blower

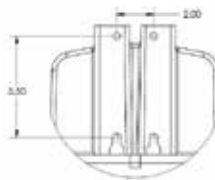
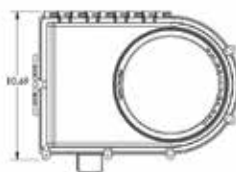
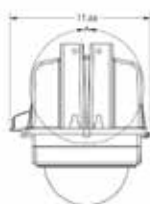
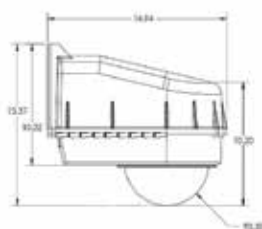
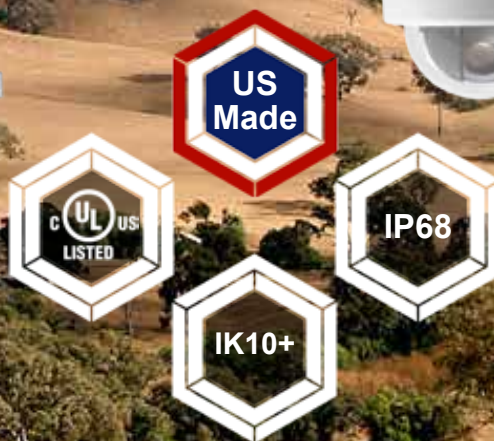
Stable camera operating temperature range of -25° F to 122° F (-32° C to 50° C).

D Series

The D Series IP68 Heater Blower camera housing provides a stable camera operating temperature range of -25° F to 122° F (-32° C to 50° C) and protects cameras from variable ranging climates from freezing to hot. The D2 and D3 are engineered for optimal camera performance and reliability with all PTZ, 360°, 180°, multi sensor cameras, 4K ultra high definition security video, long range marine video, and other high value applications.

Model #:
D3-HB-MVP

Model #:
D2-HB-MVP



Specifications
Operating Temperature (Absolute/Rec.):
-25° to 140° F (-32° C to 60° C)
0° to 120° F (-17° C to 49° C)
Power Consumption:
2 amps @ 115 VAC typical at full load
MVP Input Power Source Options:
24VAC, 110 VAC, or 220 VAC
MVP Output Options for Camera Power:
12VDC, 24V
Internal Power Available for Camera:
2.25 amps @ 12 VDC on typical model
Shipping: 17" x 13" x 16" - 12 lbs (5.4 Kg)

(866) 575-4689 | Shipping Worldwide

estore.dotworkz.com

American Made ★★★★★ American Strong ★★★★★

Water and temperature protection for mild temperature variations.

S-Type

The S-Type Heater Blower camera housing provides a stable camera operating temperature range of -25° F to 122° F (-32° C to 50° C) and protects cameras from variable ranging climates from freezing to hot. This professional grade outdoor video surveillance protection system is optimized for high performance static video cameras, including the latest precision HD/megapixel network based systems. The new Stainless Steel arm provides extra strength, corrosion proofing, greater stability, and durability.

BASH[™]
Ballistic Anti-Shock Housing

Professional camera armor for all mobile, marine, and security video applications with IP68 protection. Designed for all mini-dome, megapixel, micro PTZ, HD, and specialty cameras.

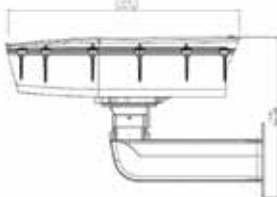


Model #:
ST-HB-MVP-SS

NEW:
Stainless
Steel Arm

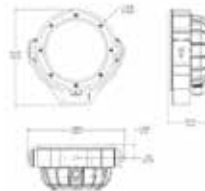


Model #:
BASH-HB-POE



Specifications

Operating Temperature (Absolute/Rec.):
-25° to 140° F (-32° C to 60° C)
0° to 120° F (-17° C to 49° C)
Power Consumption:
2 amps @ 115 VAC typical at full load
MVP Input Power Source Options:
24VDC/VAC, 110 VAC, or 220 VAC
MVP Output Options for Camera Power:
12VDC, 24V
Internal Power Available for Camera:
2.25 amps @ 12V or 1.1 amps @ 24V
Shipping: 24" x 10" x 10" - 11 lbs (5 Kg)



Specifications

Operating Temperature (Absolute):
-25° to 140° F (-32° C to 60° C)
Operating Temperature (Recommended):
0° to 120° F (-17° C to 49° C)
Power Input:
Passive PoE, 46VDC-56VDC @ 30W
Output Options for Camera Power:
48 VDC Passive PoE, 14W Max
Shipping: 10" x 11" x 7"
- 7 lbs (3.2 Kg)

(866) 575-4689 | Shipping Worldwide

estore.dotworkz.com

American Made ★★★★★ American Strong ★★★★★

Mild / Temperate

Customizable and durable camera housings built to order and built to last.

D Series

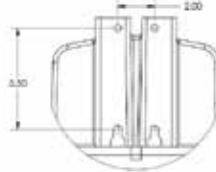
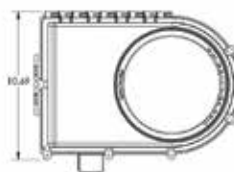
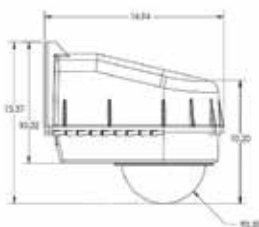
The D Series IP68 camera housing is engineered for optimal camera performance and reliability with all PTZ, 360°, 180°, multi sensor cameras, 4K ultra high definition security video, long range marine video, and other high value applications.



Model #:
D2-BASE



Model #:
D3-BASE



Specifications

Enclosure Construction:
Dotworkz Non-corrosive Thermoplastic

Lens Construction:
Precision View High Impact Nylon

Shipping Dimensions:
17" x 13" x 16"

Shipping Weight:
9 lbs (4.1 Kg)

Usable Space Inside Housing:
Fits any CCTV/IP PTZ camera, wireless radios, NVRs, 3G/4G routers, fiber converters, and other sensitive electronics.

(866) 575-4689 | Shipping Worldwide

estore.dotworkz.com

American Made ★★★★★ American Strong ★★★★★

Water, dust, insect, and rust proof housings with vandal resistance.

S-Type

The Dotworkz S-Type professional grade outdoor video surveillance protection system is optimized for high performance static video cameras, including the latest precision HD/megapixel network based systems. The stabilized arm provides extra strength and reliability for long range video applications, thermal, static, fixed, and other brick style cameras. The new Stainless Steel arm provides extra strength, corrosion proofing, greater stability, and durability.

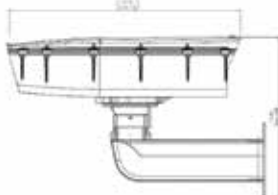
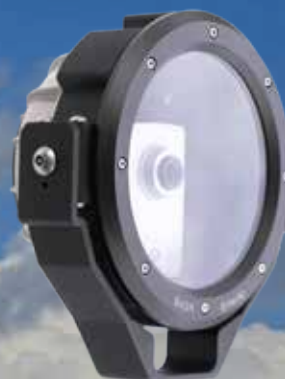
BASHTM
Ballistic Anti-Shock Housing

Professional camera armor for all mobile, marine, and security video applications with IP68 protection. Designed for all mini-dome, megapixel, micro PTZ, HD, and specialty cameras.

Model #:
ST-BASE-SS

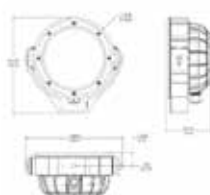
**NEW:
Stainless
Steel Arm**

Model #:
BASH-OG



Specifications

Enclosure Construction:
Dotworkz Non-corrosive Thermoplastic
Lens Construction:
Precision View High Impact Acrylic
Shipping Dimensions:
24" x 10" x 10"
Shipping Weight:
11 lbs (5 Kg)
Usable Space Inside Housing:
Fits any CCTV/IP brick style camera, small NVRs, 3G/4G routers, fiber converters, and other sensitive electronics.



Specifications

Enclosure Construction:
Type III Hard Anodized 6061-T6 Aluminum and Heat Resistant Thermoplastic Shell
Lens Construction:
Clear High Impact lens system
Shipping Dimensions: 10" x 11" x 7"
Shipping Weight: 7 lbs (3.2 Kg)
Usable Space Inside Housing:
Fits almost any small form factor CCTV/IP mini dome camera and action cameras. 5.5" diameter 2.2" height with flat lens. 5.5" diameter 3.9" height with "bubble" lens.

(866) 575-4689 | Shipping Worldwide

estore.dotworkz.com

American Made ★★★★★ American Strong ★★★★★

Cooldome™ with Heater Blower

Large scale, outdoor housings that are designed to protect broadcast quality cameras.

HD12 “Mega Size”

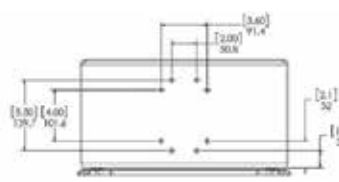
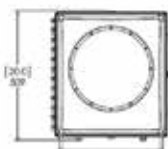
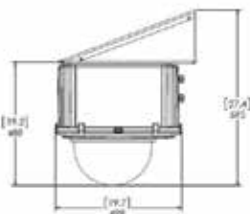
The Dotworkz HD12 product line consists of large scale, outdoor housings that are designed to protect broadcast quality PTZ cameras from the harshest environmental conditions. With combined heater/blower and COOLDOME™ technology, the HD12-CD-HB is designed to exceed IP66/NEMA 4X standards for ingress protection, providing excellent protection from water, dust, corrosion, and insects.



Model #:
HD12-CD-HB



Model #:
HD12-HB



Specifications

Operating Temperature (Absolute/Rec.):
-40° to 167°F (-40°C to 75°C)
30° to 145°F (-1°C to 63°C)
Power Consumption (without camera):
9 amps @ 12 VDC typical at full load
Input Power Source Options:
12 VDC, 110 V AC, or 220 VAC
Output for Camera Power:
12 VDC
Internal Power Available for Camera:
3 amps @ 12 VDC on typical model
Shipping: 20" x 22" x 30" - 34 lbs (5.4 Kg)

(866) 575-4689 | Shipping Worldwide

estore.dotworkz.com

American Made ★★★★★ American Strong ★★★★★

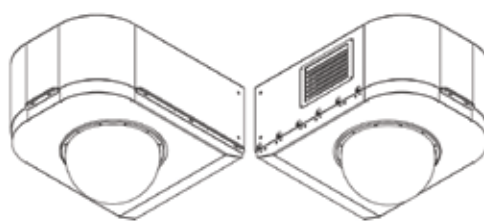
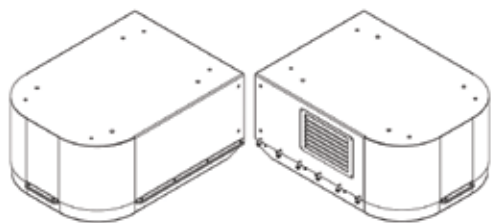
2-in-1 temperature features with active cooling with thermostatic temperature control for hot climates and a heater blower for cold climates.

BRZ12 “Breeze” Series

The BRZ is larger and stronger than the HD12 camera housings. The BRZ adds an extra layer of vandal and weather protection for all broadcast quality PTZ cameras and other sensitive equipment mounted inside. With combined heater/blower and COOLDOME™ technology, the BRZ-CD-HB is designed to exceed IP66/NEMA 4X standards for ingress protection, providing excellent protection from water, dust, corrosion, and insects.



Model #:
BRZ-CD-HB



Specifications
Operating Temperature (Absolute/Rec.):
-40° to 167°F (-40°C to 75°C)
30° to 145°F (-1°C to 63°C)
Power Consumption (without camera):
9 amps @ 12 VDC typical at full load
Input Power Source Options:
12 VDC, 110 V AC, or 220 VAC
Output for Camera Power:
12 VDC
Internal Power Available for Camera:
3 amps @ 12 VDC on typical model
Shipping: 28" x 30" x 38" - 50 lbs (5.4 Kg)

(866) 575-4689 | Shipping Worldwide

estore.dotworkz.com

American Made ★★★★★ American Strong ★★★★★

Accessories, Mounting, and More

From network recorders, to mounting and maintenance - we've got you covered.



Ballistic Shield Kit for the D2

The Mark IV protects against medium arms fire ranging from 9mm to 16 gauge shotgun rounds.

Product Code: KT-SHIELD



Outdoor Power Pack Pole Mount Kit

12V Outdoor Power Pack and Pole Mount Kit for COOLDOME™ enclosures.

Product Code: KT-CDR-2



Dotworkz Microphone and Enclosure

A great addition to any outdoor audio capture for all cameras.

Product Code: KT-MIC



DomeCleaner - Dome Lens Cleaning Package Pro Kit

The best selling Dome Lens Cleaning Package on the market.

Product Code: DW-PKG1



Ballistic Lens for BASH™

The Ballistics Lens for the BASH security camera enclosure is level 1 rated bullet proof.

Product Code: AC-BA-LENS



Nylon Lens (2017 Model)

Optically clear for 4K + resolution. Stronger for IK10 + vandal protection. Works with all D Series Enclosures.

Product Code: KT-CLNS-4K



NEW: Stainless Steel Arm

Stainless Steel Arm for all S-Type Camera Housings

Optional power supply (PS-OD240-12) can be mounted inside the arm.

Product Code: BR-STSS



Solar Camera Enclosure & Power Station

All kits provide remote stand-alone solar power and are turn-key ready.

Product Code: Inquire for details



Humidity Removal Pack

This pack is designed to remove up to three cubic feet of moisture and is rechargeable.

Product Code: KT-HRC1



NANO MOUNT FOR UBIQUITI ANTENNAS

Dotworkz Nano Mount for Ubiquiti antennas

For all Ubiquiti PowerBeam & NanoStation antennas.

Product Code: KT-UBNT-NANO



Xero 2.0 a Network Video Recorder (NVR)

The Xero 2.0 is a Network Video Recorder by Dotworkz is known for its performance and small form factor.

Product Code: NVR-XERO



Online Store!

Visit our online store to view our entire list of products...
estore.dotworkz.com

Custom Security Camera Housings

Paint your security camera housing any color to match the installation site.



Custom Outdoor Surveillance Solutions

We are committed to developing innovative solutions for all weather conditions to protect all camera components. Our products can be customized with climate specific internal components as well as custom exterior paint options for environment camouflage.

(866) 575-4689 | Shipping Worldwide

estore.dotworkz.com

American Made ★★★★★ American Strong ★★★★★

Where to Buy:

Go Online
estore.dotworkz.com

OR

Call Us
(866) 575-4689



How To Buy

PHONE

(866) 575-4689
Mon - Fri: 8am - 5pm PST

U.S. based team, with convenient call hours, can help you customize the right housing for your outdoor surveillance projects.

ONLINE SHOPPING

1. Go online at estore.dotworkz.com
2. Find your camera housing or accessory
3. Add your desired products
4. Check out or continue shopping
5. We take care of the rest

TECHNICAL SUPPORT

Dotworkz Systems provides a single source for Camera Housing and Accessories support by offering California based support with our engineers who help resolve technical issues quickly and efficiently.

Dotworkz Distributors



ADI
1.800.233.6261
www.adilink.com



Anixter
1.800.ANIXTER
www.anixter.com



B&H Photo Video
800.606.6969
www.bhphotovideo.com



Canal Alarm
(800) 955-6201 CANAL WEST (MANHATTAN)
(866) 836-5111 CANAL EAST (LONG ISLAND)
www.canalalarm.com



CSC
1.630.221.6400
www.gocsc.com



SABELCO
+32 (0)2 380 97 97
www.sabelco.com



ScanSource Security
1.800.964.8994
www.scansourcesecurity.com



Solotech Ltd.
+44 7887 998969



Tessco Technologies Inc.
1.800.508.5444
www.tessco.com



Tri-ed / Northern Distribution
1.800.679.0720
www.tri-ed.com

Compatible With All Camera Brands

If you can find it we can fit it.



(866) 575-4689 | Shipping Worldwide

estore.dotworkz.com

American Made ★★★★★ American Strong ★★★★★

Sold Worldwide

Available now
estore.dotworkz.com



- No Ladder or Lift Equipment Needed



- Cleans From Ground Level



- Quick and Easy Cleaning



- Light Weight Carbon Fiber
- Shipping Worldwide

DomeWizard™

Dome/Flat Lens
Cleaning Head Unit



Model #:
DW-CLNR

US 7392564 B1

DomePRO Cleaner 40 Series

Model #: DW-PKG40-PRO



DomePRO Cleaner 25 Series

Model #: DW-PKG25-PRO



25' Carbon Fiber Extension Pole



40' Carbon Fiber Extension Pole



(866) 575-4689 | Shipping Worldwide

estore.dotworkz.com

American Made ★★★★★ American Strong ★★★★★

Applications, Installations, and More

Since 1998 we've been installing camera solutions for every application imaginable.



Model #: DW-PKG1
with D2-BASE housing
and BR-Q60-E bracket



Model #: BASH-GPRO



Model #: D2-CD-24V



Model #: D2-HB-MVP
and Axis T93C10



Model #: ST-HB-MVP
and KT-HOOD
S-Type 4K Ready



Model #: BASH-HB-POE
Kryptek Pattern Paint Dip



Model #: BASH-OG



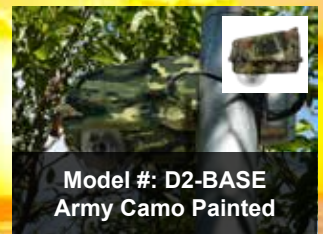
Model #: D2-HB-MVP



Model #: D2-RF-MVP



Model #: BASH-HB-POE



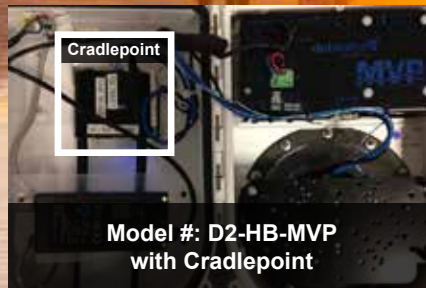
Model #: D2-BASE
Army Camo Painted



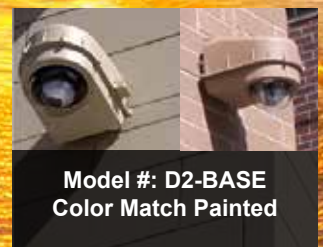
Model #: D2-RF-MVP
(Work Trailer)



Model #:
OEM and ODM



Model #: D2-HB-MVP
with Cradlepoint



Model #: D2-BASE
Color Match Painted



Model #: HD12-CD-HB



Model #: D2-HB-POE-HP



Model #: ST-HB-MVP
and ST-TR-POE