

## Heat Things Up, with the Dotworkz IP Thermal Lens

Catch vandals in the act—day or night, rain or shine—with the outdoor capabilities of the Dotworkz IP Thermal Lens.

Paired with the rugged Dotworkz S-type enclosures for ultimate camera protection, the Thermal Lens allows thermal imaging camera models to see through haze, smoke, dust and fog, 24 hours-a-day and seven days-a-week.

The specialized Germanium lens engineered by Dotworkz gives detailed thermal imaging for security, surveillance, and other commercial business needs, all with the durability of the Dotworkz line of housings.



innovative

## KT-THERM-GE: Germanium Thermal Imaging Lens for Dotworkz S-Type Enclosures



### Description:

Thermal Imaging Lens Made from high-quality Germanium for optimum thermal clarity, the Dotworkz IP Thermal Lens provides the highest degree of protection for thermal imaging technology.

Thermal Network Cameras have become an essential part of security and surveillance, and Dotworkz has developed an IP Thermal Lens to enhance the thermal footage, and paired it with the protection standards of the Dotworkz S-Type housings. Highly sensitive thermal cameras can now be deployed with the benefit of Dotworkz protection and internal climate controls.

remote video solutions

### Features:

- Field Replaceable Thermal Imaging Lens Kit
- 2.8" Diameter Viewing Window for maximum viewing angle
- Ideal for commercial, industrial, indoor, & outdoor deployments in extreme weather conditions
- Compatible with virtually all thermal imaging camera models
- Available pre-installed on all Dotworkz S-Type models
- Compatible with all Dotworkz S-Type enclosures
- Engineered with external hard-coating & internal anti-reflective coating
- Also available in Polyethylene as a cost-effective thermal imaging solution (Dotworkz Product #KT-THERM-PE)

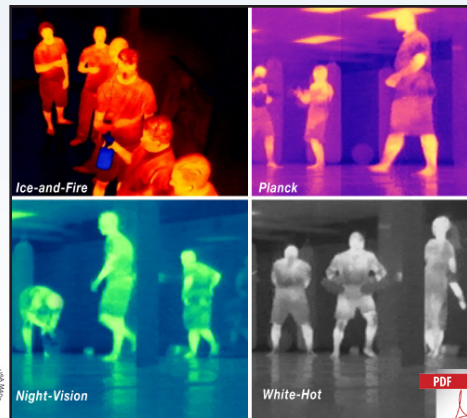
### Specs:

Internal Dimensions (for camera and added S-Type Base model):

3.8" x 5.25" x 17.75"

Internal Dimensions (for camera and added S-Type Environmental models):

3.8" x 5" x 13"



www.dotworkz.com 866.575.4689

