

NOTES: UNLESS OTHERWISE SPECIFIED

1. MATERIAL -
 TELESCOPING TUBES: EXTRUDED AL 6061
 ROUND CEILING BASE & PAN TILT KNUCKLE: STAINLESS STEEL 304 GRADE
 FASTENERS: STAINLESS STEEL 18-8, 304 GRADE

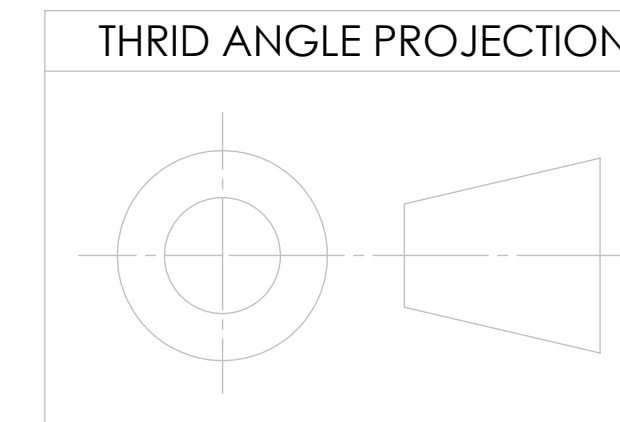
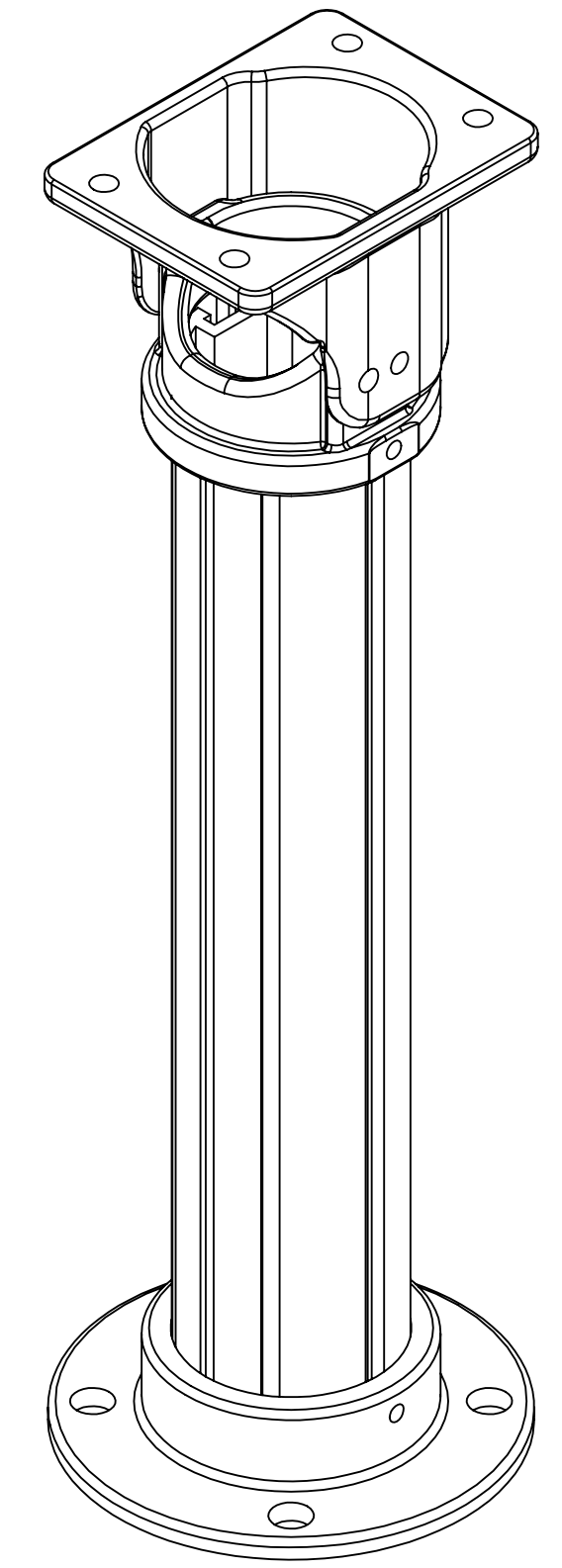
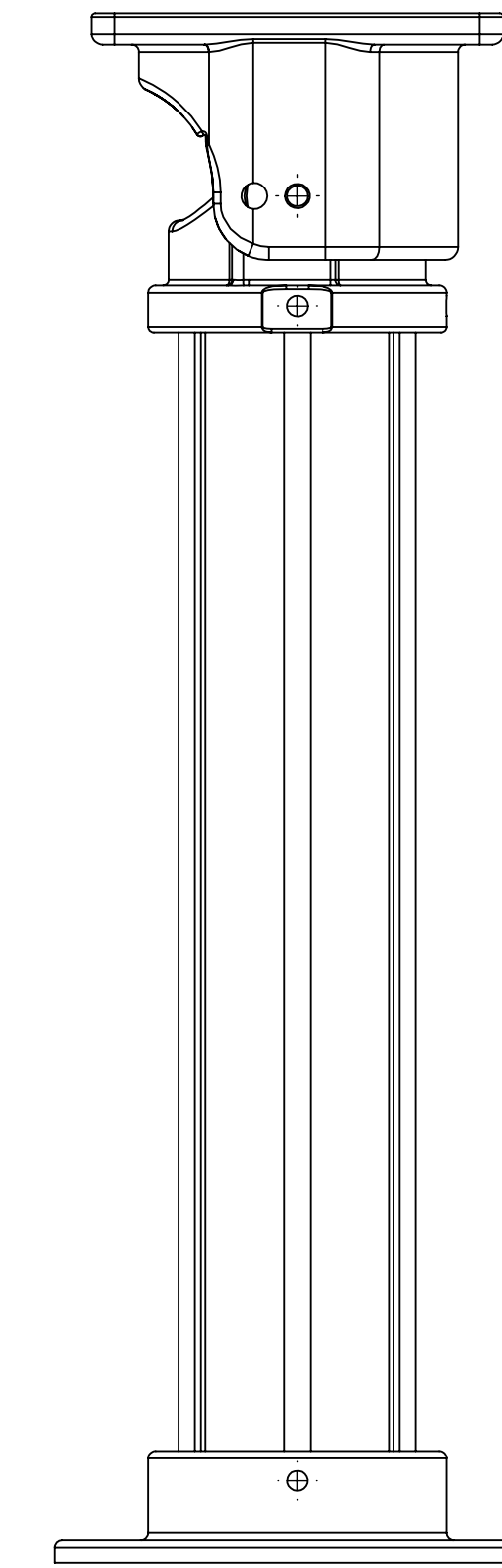
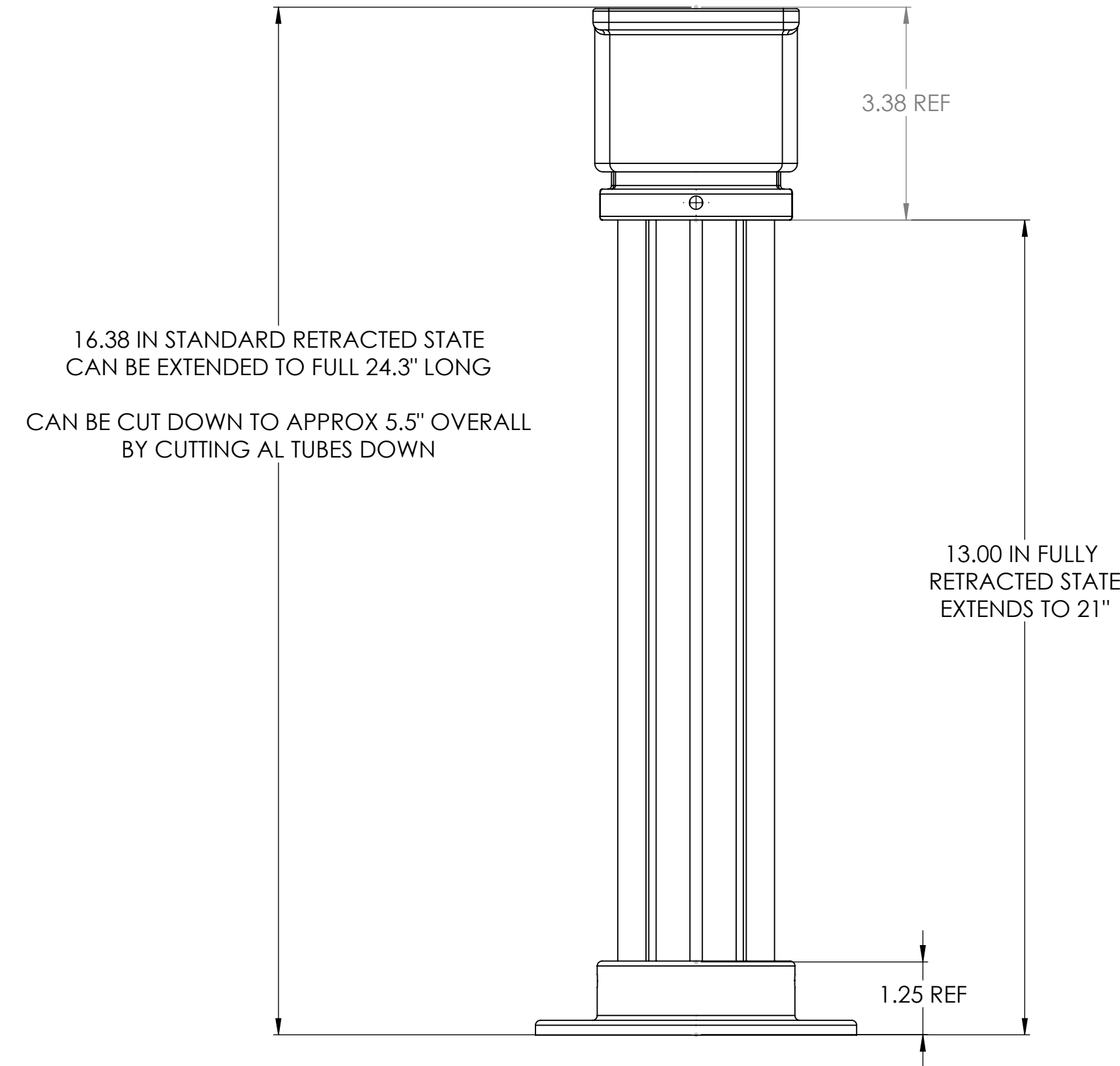
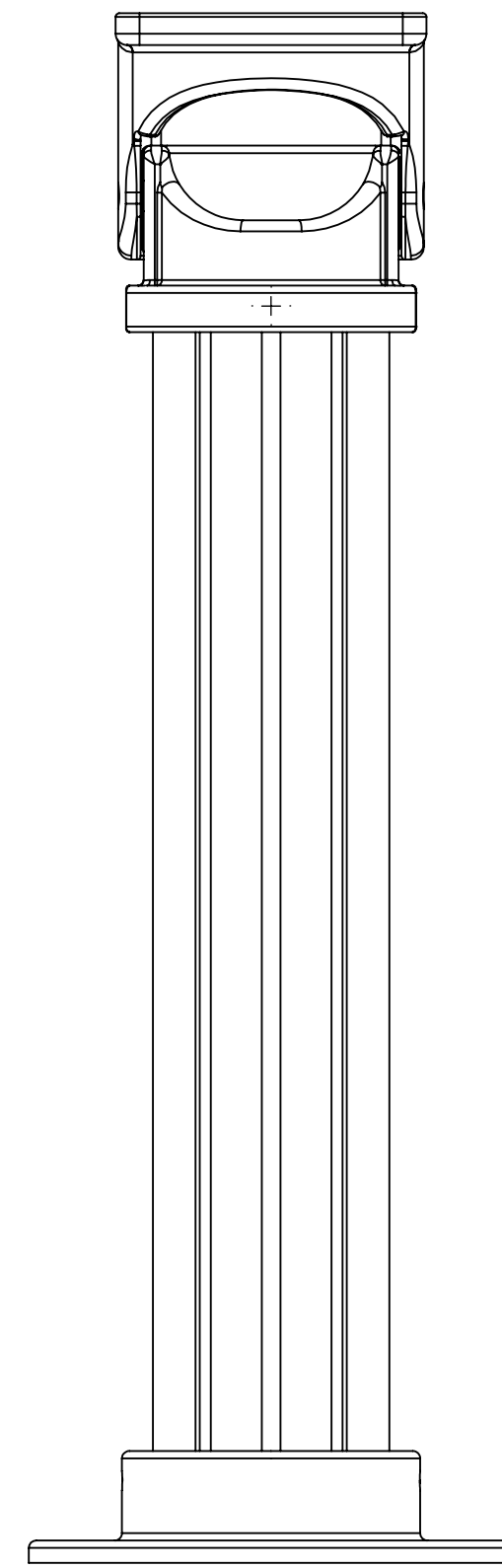
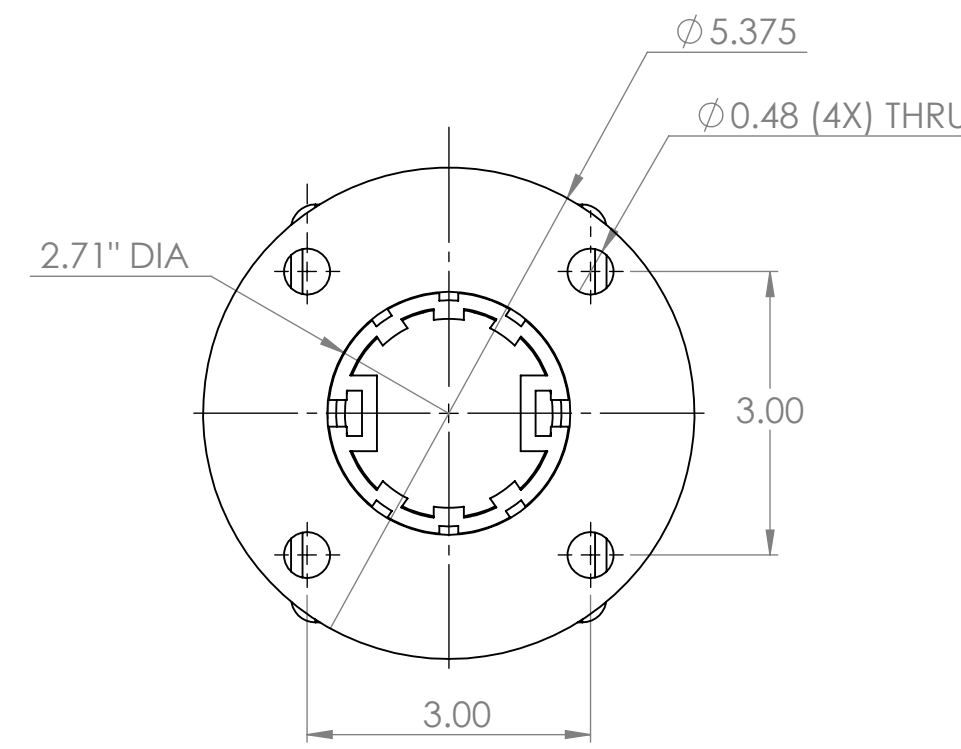
2. FINISH:
 1. DEBURR AND BREAK SHARP EDGES 0.25 [0.010"] MIN.
 WHITE POWDERCOAT SEMI-GLOSS TIGER/ DRYLAC WHITE 49/13721, OR EQ.

PART CAD GENERATED. ALL DIMENSIONS NOT SHOWN ARE DERIVED FROM SOLID MODEL.

3. UNLESS OTHERWISE SPECIFIED:
 DIMENSIONS ARE IN INCHES
 FORMING TOLERANCES:
 LINEAR: .XX = ±.030, .XX = ±.020
 HOLES: ±.005
 ANGULAR: ± 1°
 K-FACTOR: 0.42

BRACKET KIT INCLUDES:

ALLEN HEX WRENCH 5/32"
 (4X) S/S LAG BOLTS: 5/16" x 2.0" FOR BASE ANCHORING
 (4X) S/S 1/4"-20 ENCLOSURE MT BOLTS



UNLESS OTHERWISE SPECIFIED:		UNLESS OTHERWISE SPECIFIED:		DIMENSIONS ARE IN INCHES		FORMING TOLERANCES:		LINEAR: .XX = ±.030, .XX = ±.020		HOLES: ±.005		ANGULAR: ± 1°		K-FACTOR: 0.42	
INTERPRET GEOMETRIC TOLERANCING PER:		ASME Y14.5-2009		MATERIAL		SEE NOTE 1		FINISH		SEE NOTE 2		PROPRIETARY AND CONFIDENTIAL THE INFORMATION CONTAINED IN THIS DRAWING IS THE SOLE PROPERTY OF DOTWORKZ SYSTEMS. ANY REPRODUCTION IN PART OR AS A WHOLE WITHOUT THE WRITTEN PERMISSION OF DOTWORKZ SYSTEMS IS PROHIBITED.			
DRAWN		NAME		DATE		dotworkz		TITLE:		BR-ASM2		REV		010	
CHECKED		JJ Hilton		053119		MFG APPR.		Q.A.		COMMENTS:		SIZE		DWG. NO.	
ENG APPR.		JJ Hilton		053119		SCALE: NTS		WEIGHT:		SHEET 1 OF 1		BR-ASM1			

PRODUCT WEIGHT INCL CARTON: 6.0 LBS
 CARTON SIZE: 6.5" X 6.5" X 22.5"